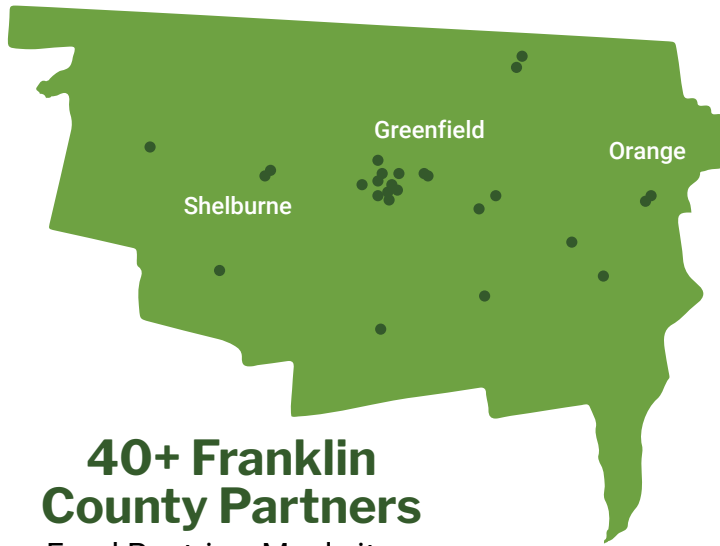


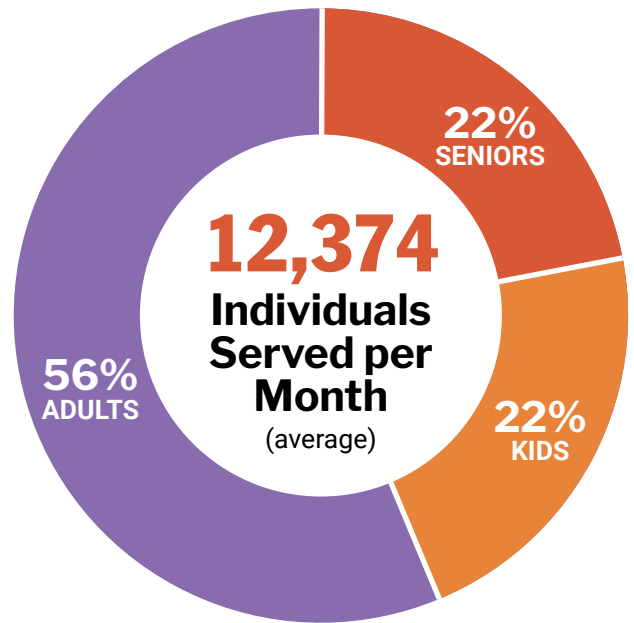
Franklin County Impact Data

Fiscal year 2025:
October 2024 - September 2025



40+ Franklin County Partners

Food Pantries, Meal sites,
Non-emergency sites, Shelters,
Mobile Food Banks, Brown Bag sites



Food Distribution



45%
Non-Perishables



24%
Fresh Fruit & Vegetables



15%
Meat



10%
Dairy



6%
Other Perishables



SNAP Outreach & Enrollment

11 Outreach events
34 Applications filed

Nutrition Education

6 Events
237 Participants



Impact

91 cents of every
\$1 in revenue is
invested in direct
impact

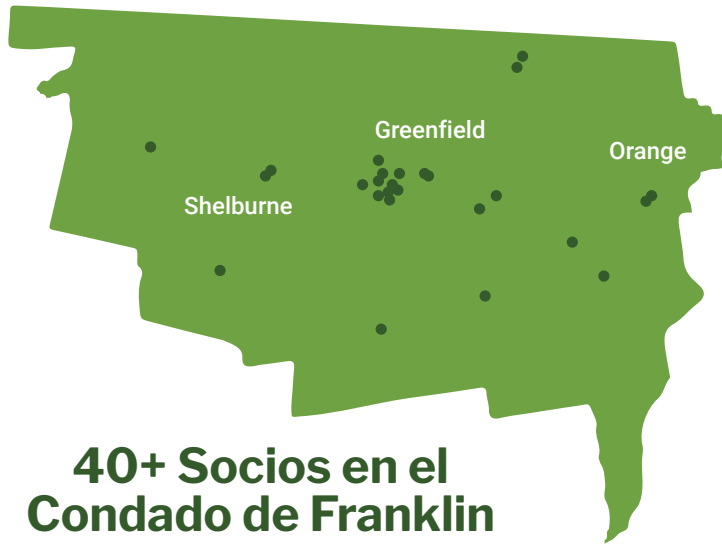


**\$1 Donation
= 3 Meals**



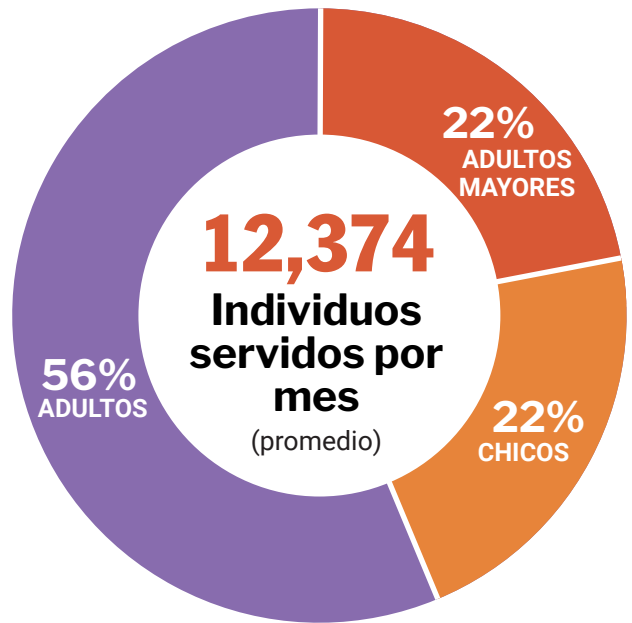
Datos de impacto en el Condado de Franklin

Año fiscal 2025: octubre de 2024 a septiembre de 2025

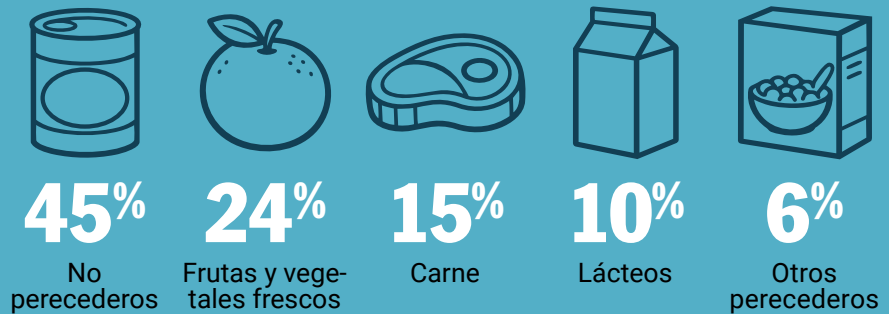


40+ Socios en el Condado de Franklin

Despensas de alimentos, sitios de comida, sitios no de emergencia, refugios, bancos de alimentos móviles, sitios de bolsas de papel



Distribución alimentaria



Alcance e inscripción en SNAP

11 eventos de alcance
34 solicitudes llenadas

Educación nutricional

6 eventos
237 participantes



Impacto

91 centavos de cada \$1 de ingreso se invierten en impactos directos



\$1 donado = 3 comidas

