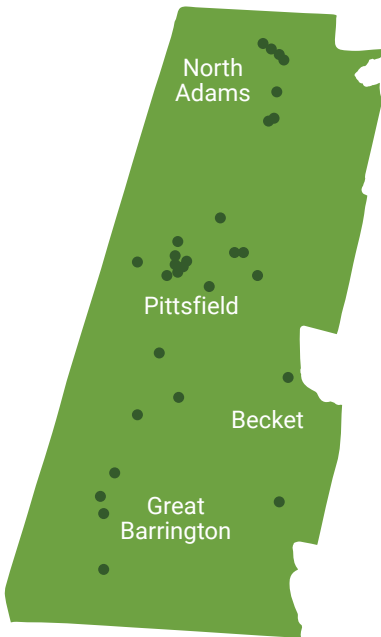


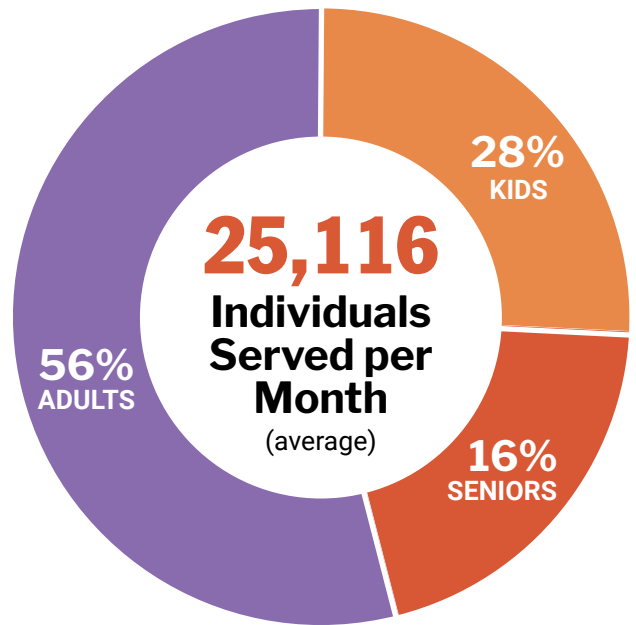
# Berkshire County Impact Data

Fiscal year 2025:  
October 2024 - September 2025



## 40+ Berkshire County Partners

Food Pantries, Meal sites, Non-emergency sites, Shelters, Mobile Food Banks, Brown Bag sites








**3.1M**  
Pounds of Food

---

**2.6M**  
Meals Provided

### Food Distribution

				
<b>45%</b>	<b>25%</b>	<b>13%</b>	<b>10%</b>	<b>7%</b>
Non-Perishables	Fresh Fruit & Vegetables	Meat	Dairy	Other Perishables



## SNAP Outreach & Enrollment

15 Outreach events  
118 Applications filed


## Nutrition Education

20 Events  
1,047 Participants



## Impact

91 cents of every \$1 in revenue is invested in direct impact



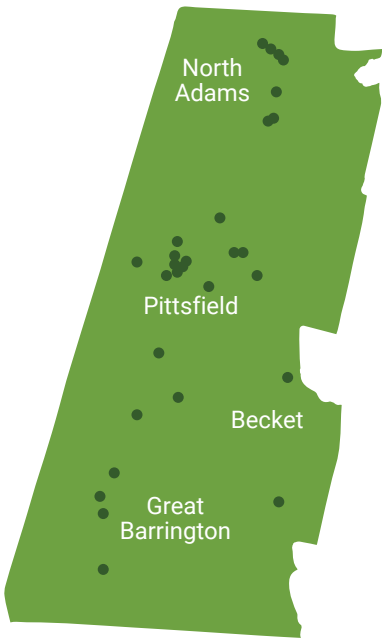


**\$1 Donation = 3 Meals**



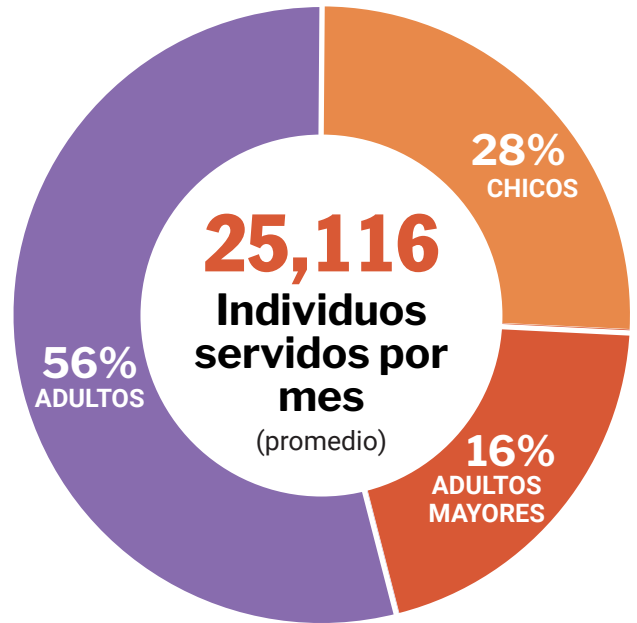
# Datos de impacto en el Condado de Berkshire

Año fiscal 2025: octubre de 2024 a septiembre de 2025



## 40+ Socios en el Condado de Berkshire

Despensas de alimentos, sitios de comida, sitios no de emergencia, refugios, bancos de alimentos móviles, sitios de bolsas de papel



**3.1M**  
libras de alimentos

---

**2.6M**  
comidas servidas

### Distribución alimentaria

Categoría	Porcentaje
No percederos	45%
Frutas y vegetales frescos	25%
Carne	13%
Lácteos	10%
Otros percederos	7%

### Alcance e inscripción en SNAP

15 eventos de alcance  
118 solicitudes llenadas

### Educación nutricional

20 eventos  
1,047 participantes

### Impacto

91 centavos de cada \$1 de ingreso se invierten en impactos directos

**\$1 donado = 3 comidas**