

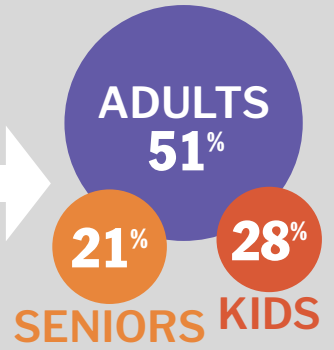
# Western Massachusetts Impact Data

Since 1982, the Food Bank of Western Massachusetts has been working to end hunger and create food equity for all.

FY 2022: October 1, 2021 to September 30, 2022

**263,467**  
individuals  
SERVED IN FY2022

AN AVERAGE OF  
**93,280**  
per month



## Food Distribution



**48%**

NON-PERISHABLES



**24%**

FRESH FRUIT & VEGETABLES



**14%**

MEAT



**10%**

DAIRY

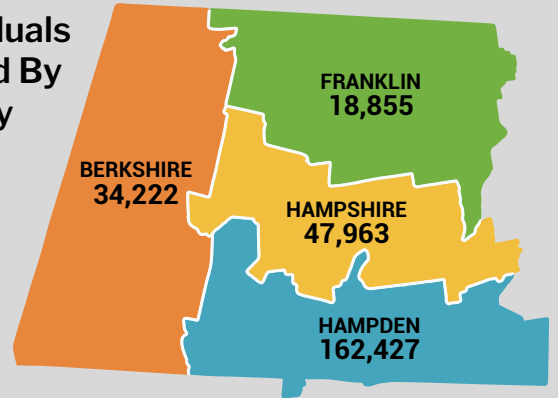


**4%**

OTHER PERISHABLES

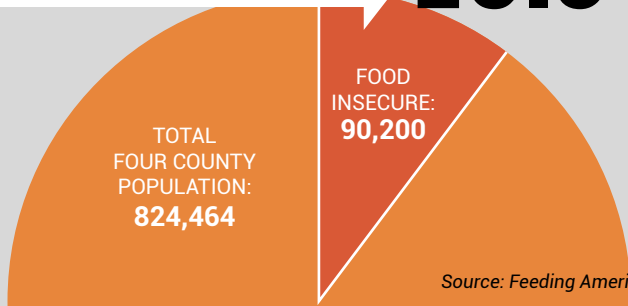
**12.1 Million lbs. = 10.1 Million Meals**

## Individuals Served By County



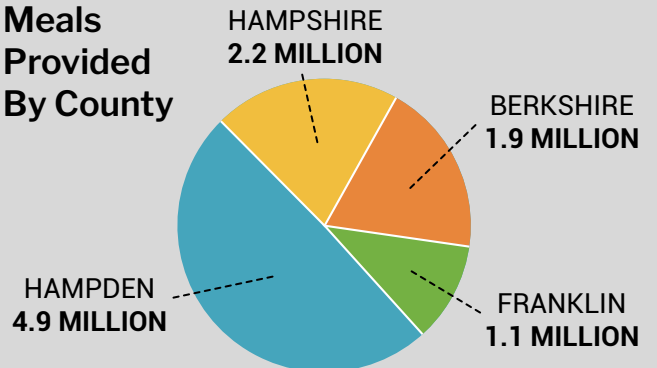
## Food Insecurity Rate

**10.9%**



Source: Feeding America

## Meals Provided By County



**\$1 Donation = 3 Meals**

With every dollar you donate, we can provide the equivalent of **three nutritious meals** to our neighbors experiencing food insecurity.



## Our 245 Western Mass Partners

- 51 Brown Bag Sites
- 104 Food Pantries
- 30 Hot Meal Sites
- 26 Mobile Food Banks
- 25 Non-emergency sites
- 9 Shelters

## Over 20 Local Farms Donate to The Food Bank



MEMBER OF  
**FEEDING AMERICA**

**USDA** United States  
Department of  
Agriculture  
Rural Development

Food Bank of Western Massachusetts  
25 Carew Street, Chicopee, MA | 413-247-9738  
[foodbankwma.org](http://foodbankwma.org)

**FOOD BANK**  
OF WESTERN MASSACHUSETTS