

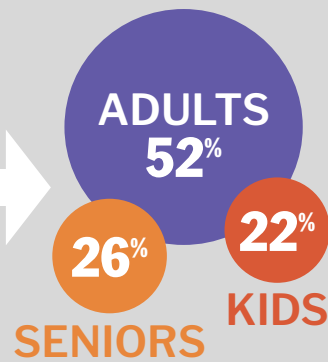
Franklin County Impact Data

From Charlemont to Orange, The Food Bank works with its Franklin County food assistance partners to help ensure everyone has access to nutritious food.

FY 2022: October 1, 2021 to September 30, 2022

18,855
individuals
SERVED IN FY2022

AN AVERAGE OF
9,045
per month



Food Distribution



46%

NON-PERISHABLES



26%

FRESH FRUIT & VEGETABLES



13%

MEAT



9%

DAIRY



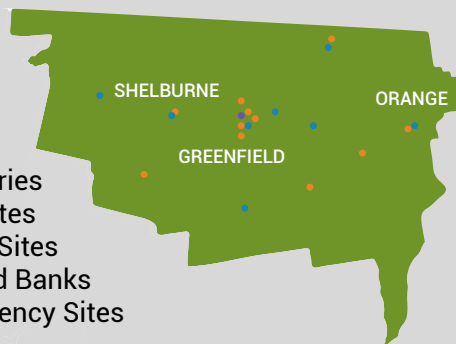
6%

OTHER PERISHABLES

1.3 Million lbs. = 1.1 Million Meals

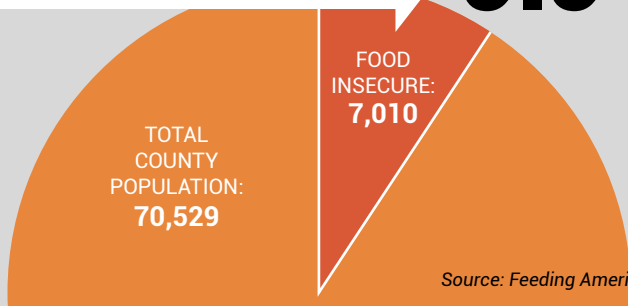
Our 41 Franklin County Partners

- 16 Food Pantries
- 7 Hot Meal Sites
- 9 Brown Bag Sites
- 2 Mobile Food Banks
- 5 Non-Emergency Sites
- 2 Shelters



Food Insecurity Rate

9.9%



Source: Feeding America

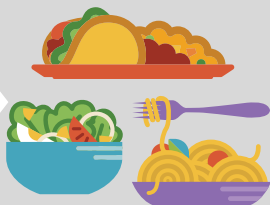
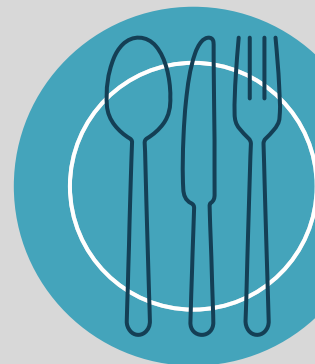
Nutrition Education*

1 event
9 participants

SNAP Outreach & Enrollment*

0 outreach events
63 applications filed

*Our outreach efforts and in-person events have been restricted due to the impact of COVID on operations.



\$1 Donation = 3 Meals

With every dollar you donate, we can provide the equivalent of **three nutritious meals** to our neighbors experiencing food insecurity.



Food Bank of Western Massachusetts
25 Carew Street, Chicopee, MA | 413-247-9738
foodbankwma.org

