

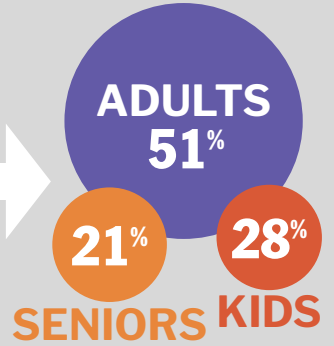
Western Massachusetts Impact Data

Since 1982, the Food Bank of Western Massachusetts has been working to end hunger and create food equity for all.

FY 2022: October 1, 2021 to September 30, 2022

263,467
individuals
SERVED IN FY2022

AN AVERAGE OF
93,280
per month



Food Distribution



48%

NON-PERISHABLES



24%

FRESH FRUIT & VEGETABLES



14%

MEAT



10%

DAIRY

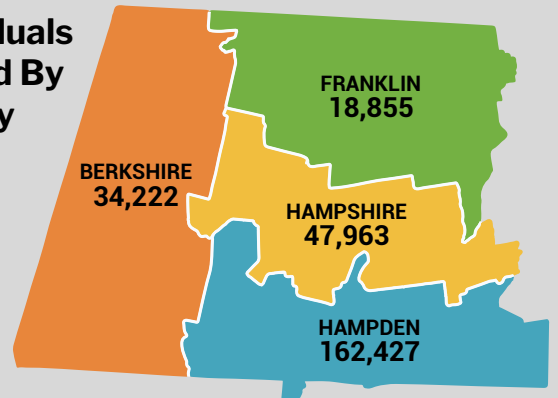


4%

OTHER PERISHABLES

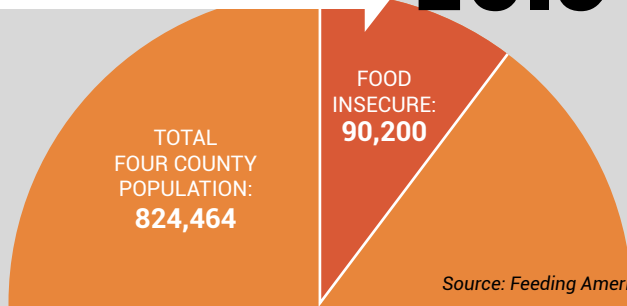
12.1 Million lbs. = 10.1 Million Meals

Individuals Served By County

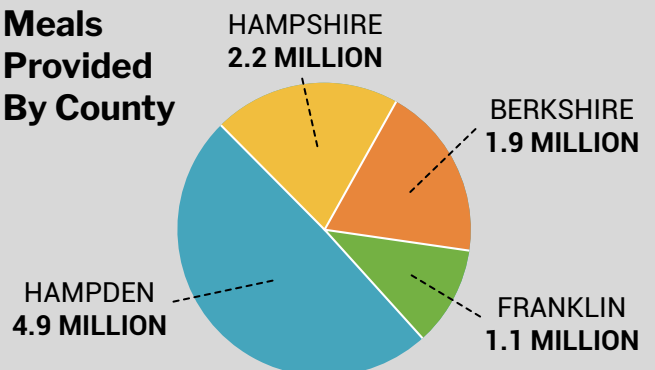


Food Insecurity Rate

10.9%



Meals Provided By County



\$1 Donation = 3 Meals

With every dollar you donate, we can provide the equivalent of **three nutritious meals** to our neighbors experiencing food insecurity.



Our 245 Western Mass Partners

- 51 Brown Bag Sites
- 104 Food Pantries
- 30 Hot Meal Sites
- 26 Mobile Food Banks
- 25 Non-emergency sites
- 9 Shelters

Over 20 Local Farms Donate to The Food Bank

