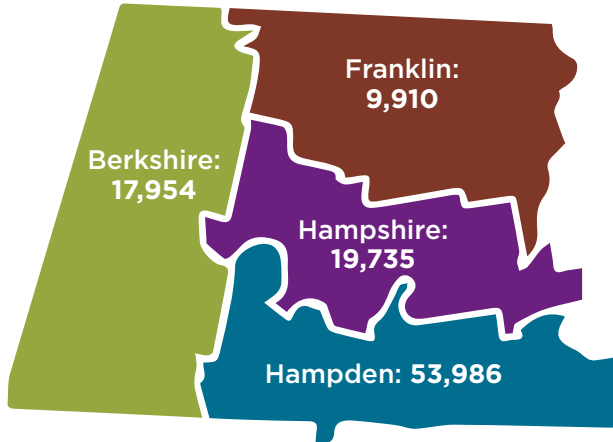




Feeding our neighbors in need and leading the community to end hunger

WHO WE ARE: Non-Profit est. 1982: Serving four counties: Berkshire | Franklin | Hampden | Hampshire

AVERAGE MONTHLY PEOPLE SERVED



101,585* SERVED TOTAL MONTHLY

*Numbers reported by 248 local feeding programs

AGE GROUPS



Kids 0-17



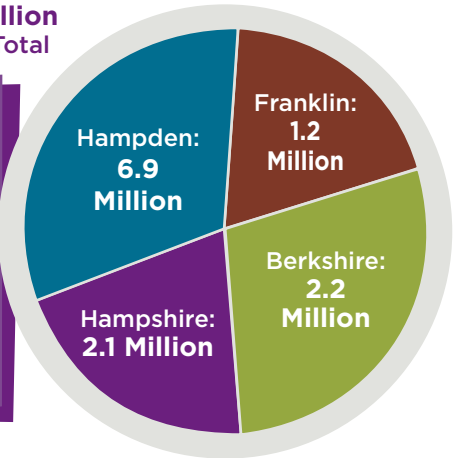
Adults 18-64



Seniors 65+

MEALS PROVIDED

12.4 Million Meals Total



TYPES OF FOOD DISTRIBUTED



Breads/Cereals
Canned Goods



Fresh Fruit &
Vegetables



Meat



Dairy



Other



WHAT WE DO

Distribute food to members: Food Pantries | Meal Sites | Shelters | Childcare Centers | Elder Care Facilities

Distribute food direct to households: Mobile Food Bank | Brown Bag: Food for Elders

Outreach: SNAP Enrollment | Nutrition Education | Advocacy | Member Capacity Building

Coalition to End Hunger | Food Bank Farms to School Initiative



Data compiled from
October 1, 2019 –
September 30, 2020

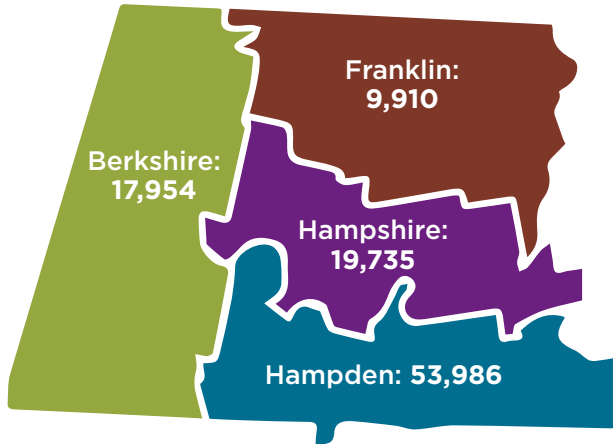
97 North Hatfield Road, Hatfield MA 413-247-9738

foodbankwma.org

This institution is an equal opportunity provider, and employer.

QUIÉNES SOMOS: Una organización no gubernamental sin fines de lucro establecida desde 1982:
Servimos a los condados: Berkshire | Franklin | Hampden | Hampshire

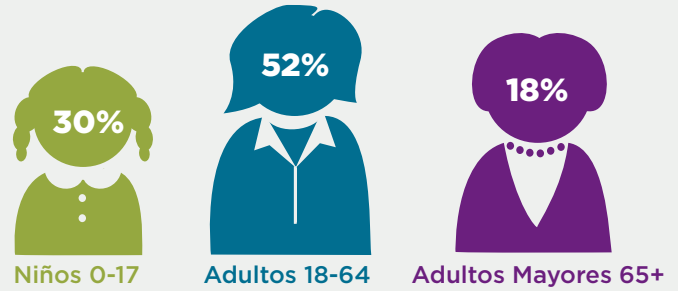
PROMEDIO DE PERSONAS MENSUALES SERVIDAS



UN TOTAL DE 101,585* PERSONAS MENSUALES

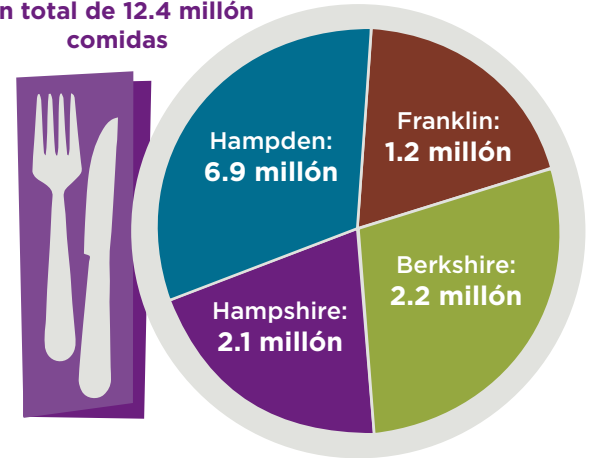
*Estos números son reportados por los 248 programas locales de alimentación.

GRUPO DE EDADES

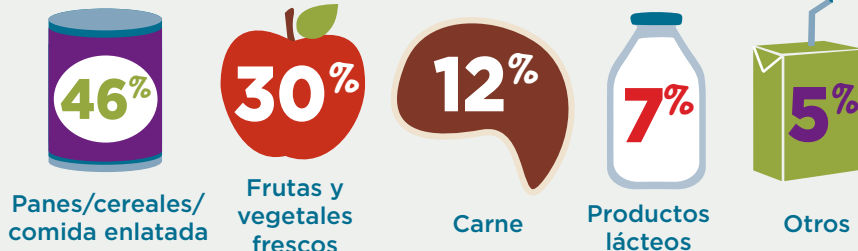


COMIDAS PROVEÍDAS

Un total de 12.4 millón comidas



TIPOS DE COMIDA DISTRIBUIDA



QUÉ HACEMOS

Distribuir alimentos a las agencias miembro: Despensas de Alimentos | Sitios de Comida | Albergues | Guarderías | Centro de personas adultas mayores

Distribuir comida directo a las personas: Mobile Food Bank | Brown Bag (Bolsa de Papel): Comida para personas adultas mayores

Servicios de Extensión: Inscripción para estampas de comida (SNAP) | Educación nutricional | Apoyo/soporte en políticas alimentarias

Talleres de capacitación y apoyo a nuestras agencias miembro | Coalition to End Hunger | Food Bank Iniciativa de la Granja a la Escuela